

## Walk Through Dillington Park

Ilminster, situated on the fringe of the Somerset Levels and the Blackdown Hills, is an ideal tourist base, especially for those who wish to explore this exceptional countryside on foot. It doesn't matter if you have but a few hours, or a few days there are walks to suit all. As you wander through a diversity of scenery, links with the past are never far away.

Where better to start than from the Market House said to have been rebuilt in 1813, though its depressed arches and Tuscan columns together with other elements indicate an earlier structure.

### Directions:

1. Leave the Market House and walk eastward up East Street passing on the right what was once the old Unitarian Church but is now the Meeting House Arts Centre. Its front has been altered, but the main structure dates from 1719.
2. Continue up East Street to Bay Hill until you see two Lodge Gatehouses on the opposite side of the road.
3. Cross the road, go between the Gatehouses and continue along the metalled path, which is part of the cycleway along Dillington Park Drive.
4. During World War II, Ilminster was one of several towns that were fortified as part of defensive line, built between the Bristol Channel and the English Channel, as protection against a possible German invasion through the South West. The defence works along the Drive were part of the fortification.

5. On reaching a gateway, pass through and continue on the path through the field to a gateway on the road by Dillington House. Dillington House was the home of Lord North on of the Prime Ministers of England.

6. After passing through the gate turn left onto the road and follow it to the junction with the main road (B3168). Turn left, cross the road and proceed up the hill towards Ilminster. Half way up the hill turn left into Old Road, which is an old stone footpath. (Alternatively continue on the footpath along the main road to get back into the town – following the pavement for approximately half a mile. At the bottom of New Road turn left to get back to the town centre.

7. Continue on up Old Road and straight down the other side, passing a commemorative Beacon on your left. On reaching the end of this footpath cross the main road and continue straight on down North Street to the Market Square.

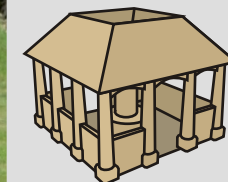
1) General Disclaimer re Routes. Although every effort has been made to ensure the accuracy of the routes shown as public rights of way and permissive path, they may change and may not be clearly defined on the ground. The public rights of way and permissive path shown on this map are only intended as an indication of the general route. To determine the exact route of a public right of way, the definitive map held by Somerset County Council should be consulted. The publisher can accept no responsibility of any errors or omissions arising from this publication. 2) General Disclaimer re Safety. All persons using the information in this guide do so at their own risk and discretion.

Designed & Produced by the Ilminster Forum  
Content Copyright Ilminster Forum 2008

Ilminster

# Walks

No. 7: DILLINGTON PARK



Ilminster Forum



Ashwell

B3168

WALK

07

ILMINSTER

# Dillington Park



3 Miles



1.52 hours



Market Square

DESCRIPTION

Pavements, cyclepaths and field footpaths. Fairly brisk throughout except for one steep gradient.

New Road

Old Road

Dillington House

Pill Box

x Beacon

Pill Box

Tank Traps

Gatehouses

Ilminster

North St.

East St.

Market Square

WC



To Yeovil

